



12 Bailey Close, Maidenhead, SL6 7YN
£235,000 Leasehold

CHAIN FREE A spacious second floor apartment conveniently located within easy walking distance of the town centre and Elizabeth line station. Features include a large south facing balcony, good size sitting room, gas central heating and residents parking.

Security Entryphone System

Door giving access to

Communal Entrance Hall

Stairs rising to second floor landing. Private storage cupboard

Sitting Room

Sliding double glazed doors to large roof terrace

Kitchen

Comprising units incorporating inset sink with mixer tap, range of wall cupboards and drawers, built in oven with separate four ring electric hob, breakfast bar, ceramic tile work surface

Bathroom

Comprising white suite of tiled panel enclosed bath with power shower attachment over, close coupled WC, wash hand basin with mirror above, cupboard space for washing machine

Bedroom 1

Wardrobes with mirrored door and vanity unit

Study/Guest Bedroom

Range of fitted wardrobes, cupboards and pull-down single guest bed

Outside

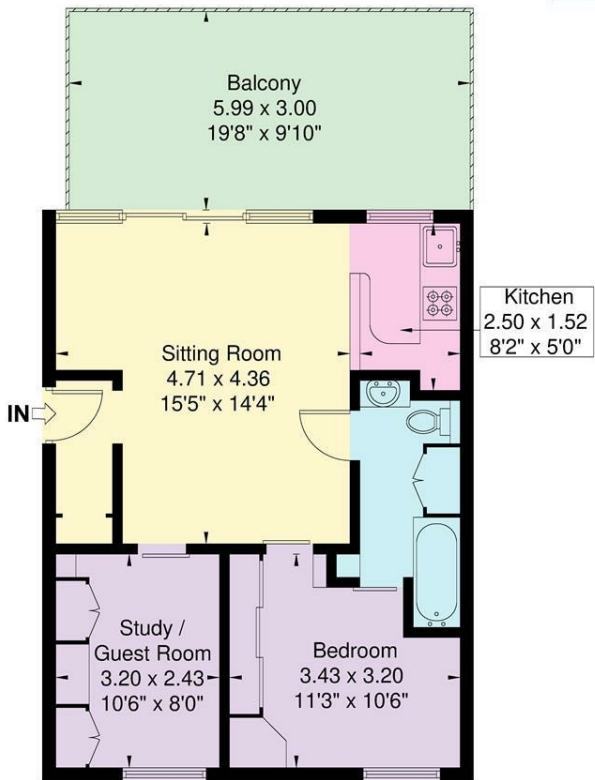
Bailey Close stands in an area interspersed with numerous mature trees and shrubs, pathway to the front, side and rear of the building.

Residents parking.

Floor Plan

Approximate Floor Area = 49.3 sq m / 530 sq ft

Bailey Close

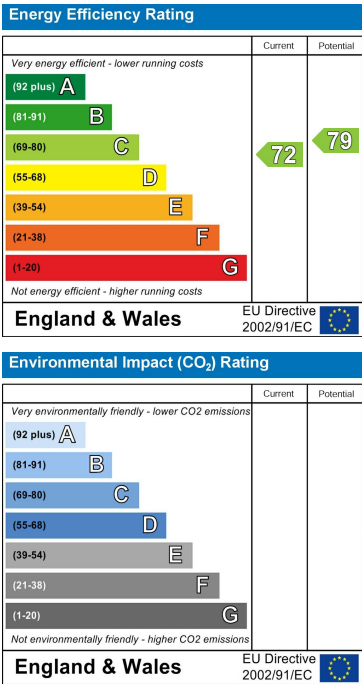


Second Floor
Illustration for identification purposes only, measurements are approximate, not to scale.

Area Map



Energy Efficiency Graph



These particulars, whilst believed to be accurate are set out as a general outline only for guidance and do not constitute any part of an offer or contract. Intending purchasers should not rely on them as statements of representation of fact, but must satisfy themselves by inspection or otherwise as to their accuracy. No person in this firms employment has the authority to make or give any representation or warranty in respect of the property.